



#### USAGE:

The SON-24 type of isolator is installed in overhead grids of medium voltage. It is used to close and open power circuits in off-load.

We make isolators in the following varieties:

\*For installation on reinforced poles, such as ŻN and BSW

- variety **A** - this type of an isolator is installed at the top of a pillar (on a cross-arm or KO-9 construction)
- variety **B** - this type of an isolator is installed on the leg of a pillar under conduits

\*For installation on rotatory poles, such as E, E<sub>m</sub> and EPV

- variety **C** - this type of an isolator is installed at the top of pillar (on a cross-arm)
- variety **C2** - this type of an isolator is installed at the top of a double pillar
  - > on a cross-arm PO-50 (conduit flat system) or
  - > on a head GS-30 (conduit trigonal system)

In your order, please note the type of pole, on which the isolator will be installed.

- variety **D** - this type of an isolator is installed on the leg of a under conduits

In your order, please note the type of pole, on which the isolator will be installed.

The manufacture product consists of a connecting apparatus, a hand drive and strands (no additional constructions are needed).

The apparatus has got copper contacts with silver plating.

Moving contacts are equipped with elastic terminals securing against fracturing the supply conduit.

There is a possibility of completing an isolator with additional retaining insulators as well as elastic terminals or with overvoltage limiters and elastic terminals.

The apparatus can be built in various insulators:

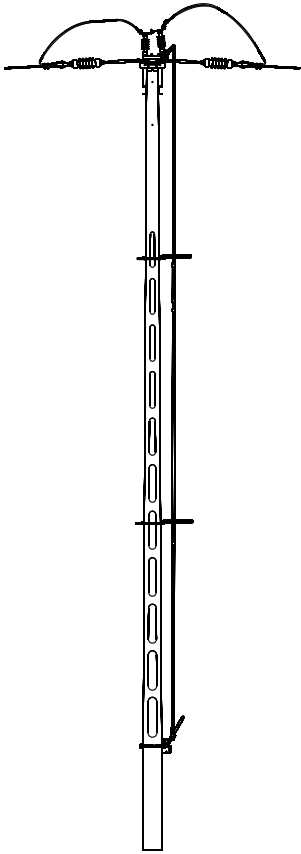
- **SON-24** type - on insulators with silicon sheds
- **SON-24cr** type - on ceramic insulators

#### TECHNICAL DATA:

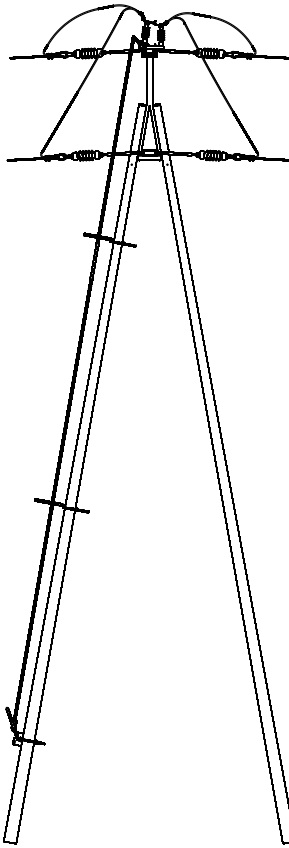
- rated voltage - 24kV
- percussive lighting voltage - 125kV
- stable rated current - 400A
- short circuit rated current 1s - 16kA

	SON-24	SON-24cr
<b>D</b>	051 441	057 441
<b>C2</b>	051 432	057 432
<b>C</b>	051 431	057 431
<b>B</b>	051 421	057 421
<b>A</b>	051 411	057 411
variety	catalogue nr	catalogue nr

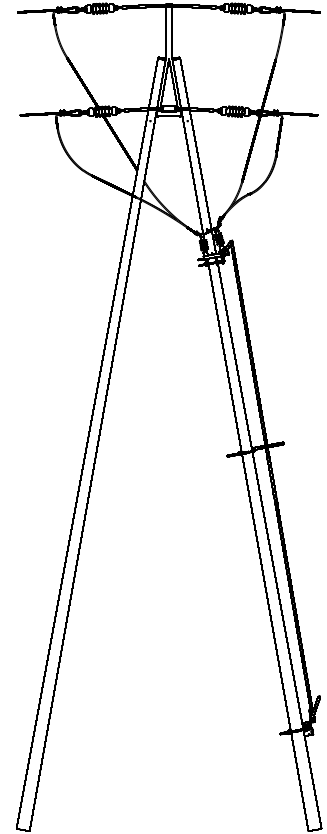
Overhead isolator type **SON-24, SON-24cr**, complete with a hand drive



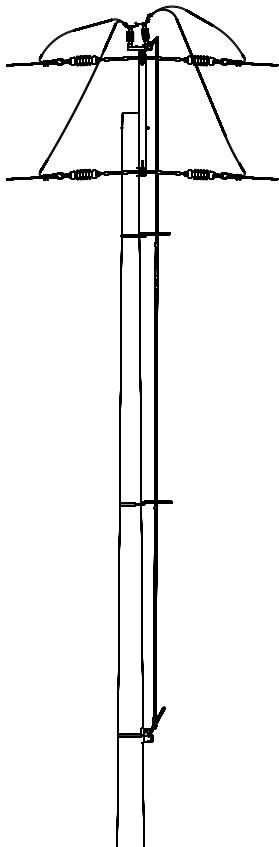
Isolator on a cross-arm



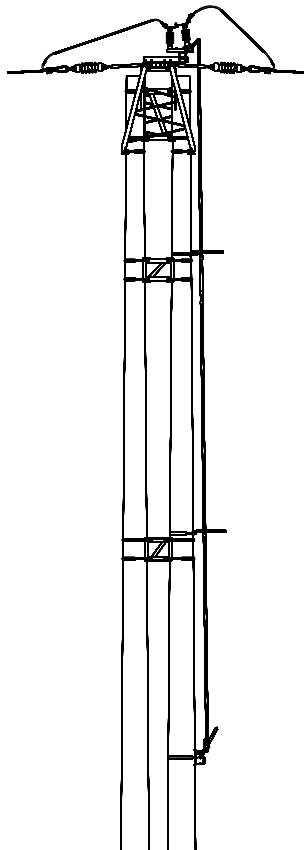
Isolator on KO-9 construction  
variety **A**



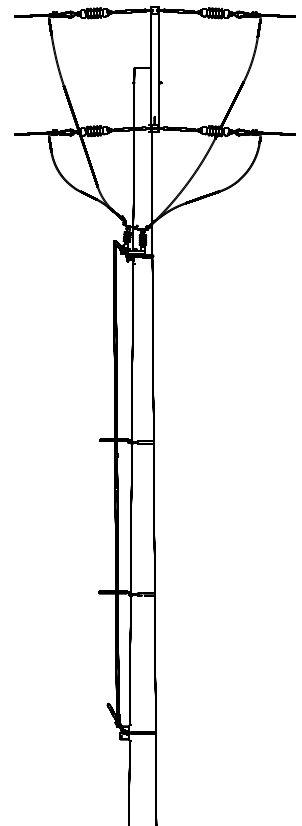
Isolator on leg of a pillar  
variety **B**



Isolator on the top  
a rotatory pillar  
variety **C**



Isolator on the top of  
a rotatory double pillar  
variety **C2**



Isolator under conduits  
on a rotatory pillar  
variety **D**

#### USAGE:

An isolator with an earthing switch SOUN-24 is installed in arterial-branch open grid of medium voltage.  
It is used to close, open and earth power circuits in off-load.

We make isolators in the following varieties:

\*For installation on reinforced poles, such as ŻN and BSW

- variety **A** - this type of an isolator is installed at the top of a pillar (on a cross-arm or KO-9 construction)

- variety **B** - this type of an isolator is installed on the leg of a pillar under conduits

\*For installation on rotatory poles, such as E, E<sub>m</sub> and EPV

- variety **C** - this type of an isolator is installed at the top of pillar (on a cross-arm)

- variety **C2** - this type of an isolator is installed at the top of a double pillar

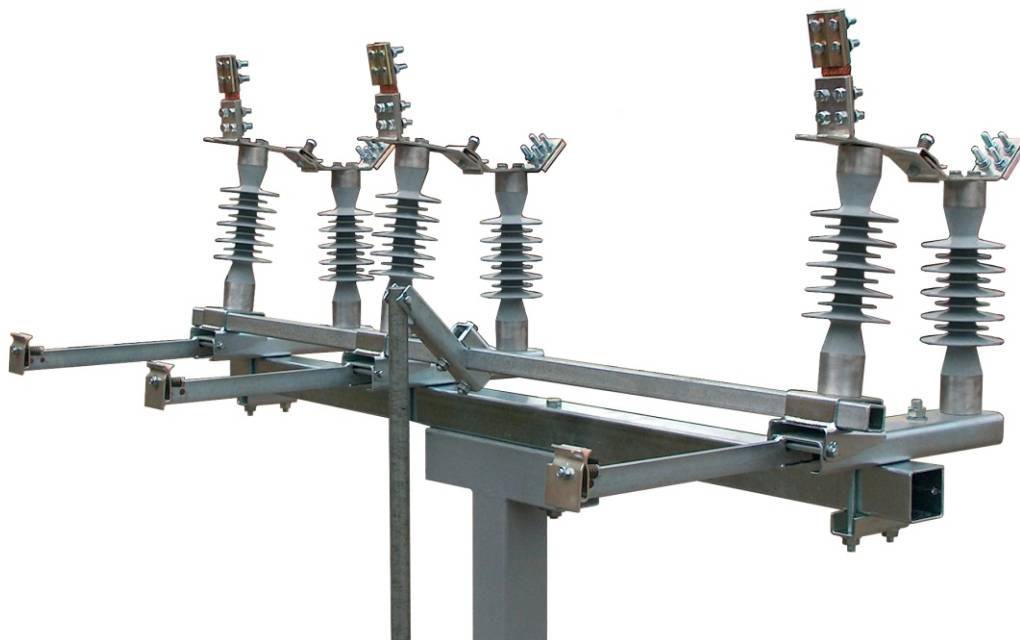
> on a cross-arm PO-50 (conduit flat system) or

> on a head GS-30 (conduit trigonal system)

In your order, please note the type of pole, on which the isolator will be installed.

- variety **D** - this type of an isolator is installed on the leg of a under conduits

In your order, please note the type of pole, on which the isolator will be installed.



The manufacture product consists of a connecting apparatus, a hand drive and strands (no additional constructions are needed).  
The apparatus has got copper contacts with silver plating.

Moving contacts are equipped with elastic terminals securing against fracturing the supply conduit.

There is a possibility of completing an isolator with additional retaining insulators as well as elastic terminals or with overvoltage limiters and elastic terminals.

The apparatus can be built in various insulators:

- **SOUN-24** type - on insulators with silicon sheds

- **SOUN-24cr** type - on ceramic insulators

The isolator with an earthing switch has the possibility of bloking in the three orientations:

- isolator in closed orientation

- isolator in open orientation, not earthed orientation

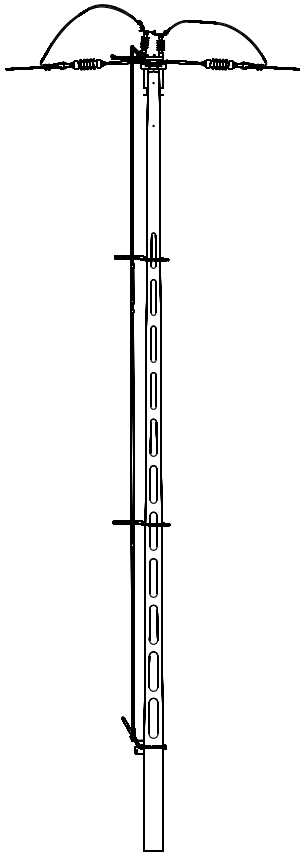
- isolator in open earthed orientation

#### TECHNICAL DATA:

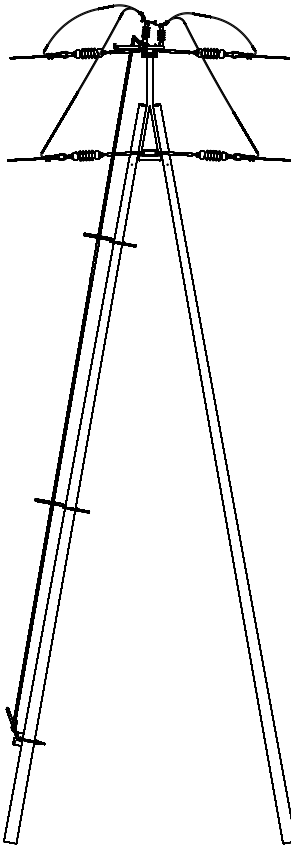
- rated voltage - 24kV
- percussive lighting voltage - 125kV
- stable rated current - 400A
- short circuit rated current 1s - 16kA

	SOUN-24	SOUN-24cr
<b>D</b>	051 341	057 341
<b>C2</b>	051 332	057 332
<b>C</b>	051 331	057 331
<b>B</b>	051 321	057 321
<b>A</b>	051 311	057 311
variety	catalogue nr	catalogue nr

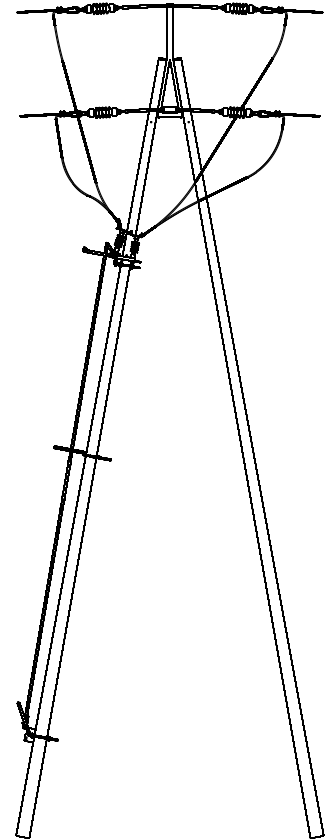
An isolator with an earthing switch type **SOUN-24, SOUN-24cr**, complete with a hand drive



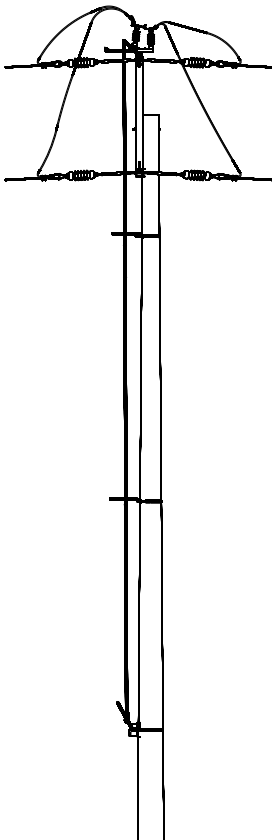
Isolator on a cross-arm



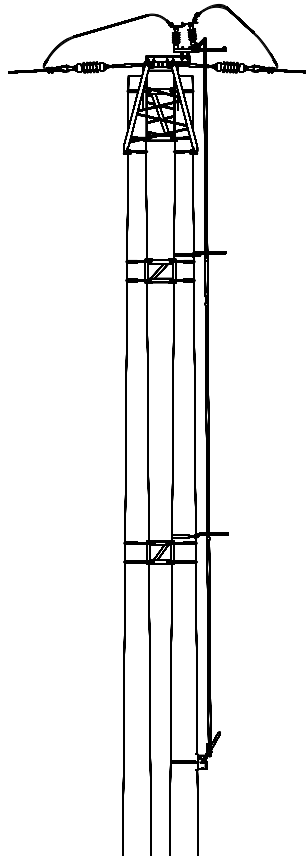
Isolator on KO-9 construction  
variety **A**



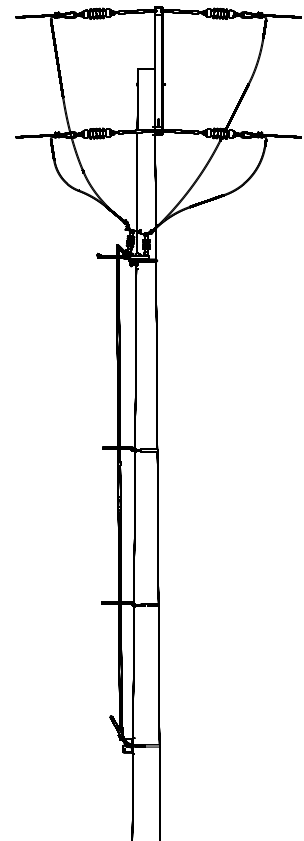
Isolator on leg of a pillar  
variety **B**



Isolator on the top  
a rotatory pillar  
variety **C**



Isolator on the top of  
a rotatory double pillar  
variety **C2**



Isolator under conduits  
on a rotatory pillar  
variety **D**

#### USAGE:

SRN-24 switch disconnecter is used to switch on and switch off currents present in distribution network of medium voltage in the range to 80A and is capable of switching short-circuit currents to 16kA.

We make switch disconnecters in the following varieties:

\*For installation on reinforced poles, such as ŻN and BSW

- variety **A** - this type of a switch disconnecter is installed at the top of a pillar (on a cross-arm or KO-9 construction)
- variety **B** - this type of a switch disconnecter is installed on the leg of a pillar under conduits

\*For installation on rotatory poles, such as E, E<sub>m</sub> and EPV

- variety **C** - this type of a switch disconnecter is installed at the top of pillar (on a cross-arm)
- variety **C2** - this type of a is installed at the top of a double pillar
  - > on a cross-arm PO-50 (conduit flat system) or
  - > on a head GS-30 (conduit trigonal system)

In your order, please note the type of pole, on which the isolator will be installed.

- variety **D** - this type of an isolator is installed on the leg of a under conduits

In your order, please note the type of pole, on which the switch disconnecter will be installed.

The manufacture product consists of a connecting apparatus and strands.

The switch disconnecter can be set in motion with:

- a/ a hand drive NO-1 to A and B varieties or hand drive NO-1/O to C, C2 and D varieties
- b/ a motor drive NKM-1

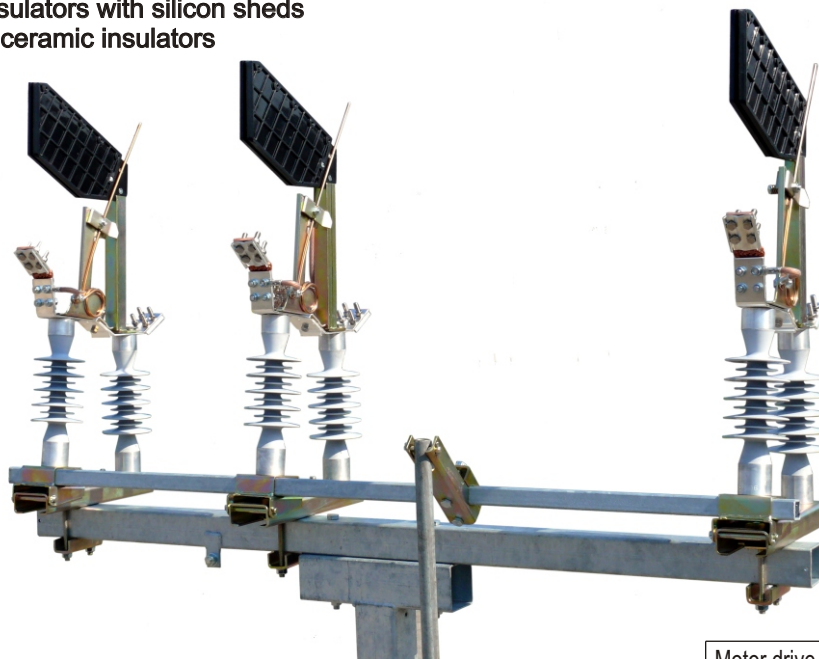
The apparatus has got copper contacts with silver plating.

Moving contacts are equipped with elastic terminals securing against fracturing the supply conduit.

There is a possibility of completing an isolator with additional retaining insulators as well as elastic terminals or with overvoltage limiters and elastic terminals.

The apparatus can be built in various insulators:

- **SRN-24** type - on insulators with silicon sheds
- **SRN-24cr** type - on ceramic insulators



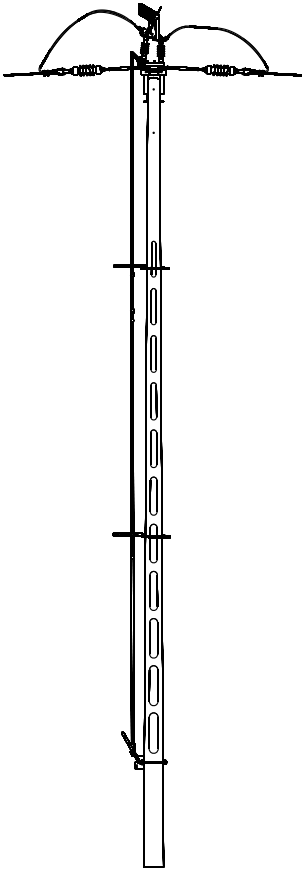
#### TECHNICAL DATA:

- rated voltage - 24kV
- percussive lighting voltage - 125kV
- stable rated current - 400A
- short circuit rated current 1s - 16kA
- rated breaking current in a circuit of small inductance - 80A
- rated breaking charging current - 20A
- rated breaking current of an earth fault - 60A
- rated breaking charging cables and voltage lines current in condition of earth fault - 38A
- switch disconnecter is equipped with extinguishing aerial chambers

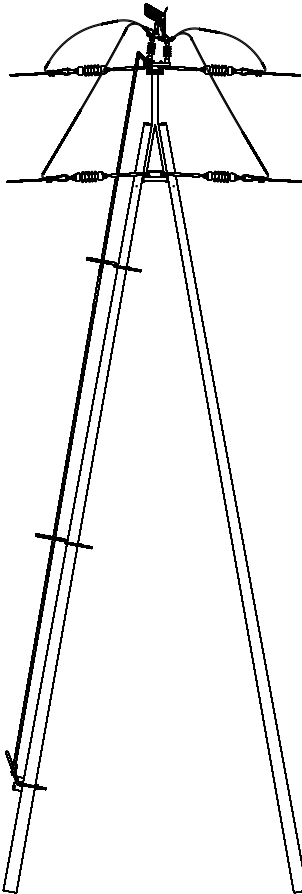
Motor drive	<b>NKM-1</b>	catalogue nr 055 401
Hand drive	<b>NO-1/O</b>	catalogue nr 050 402
Hand drive	<b>NO-1</b>	catalogue nr 050 401
	<b>SRN-24</b>	<b>SRN-24cr</b>
<b>D</b>	052 441	058 441
<b>C2</b>	052 432	058 432
<b>C</b>	052 431	058 431
<b>B</b>	052 421	058 421
<b>A</b>	052 411	058 411
variety	catalogue nr	catalogue nr

Overhead switch disconnecter type **SRN-24, SRN-24cr**

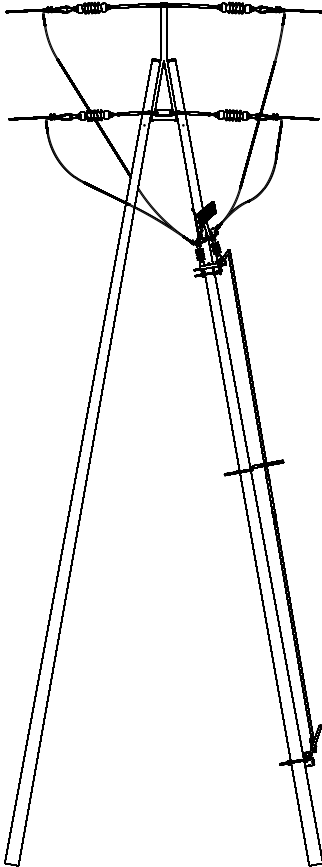




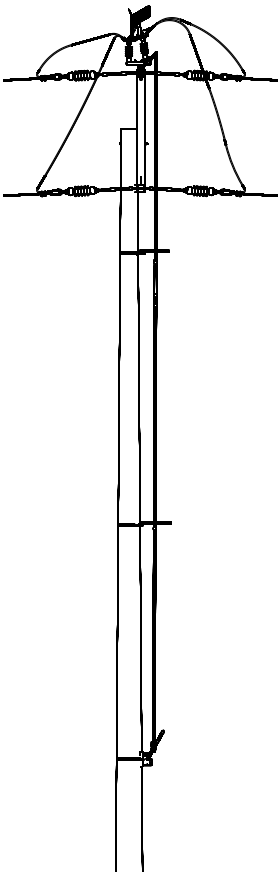
Swich disconnector on a cross-arm



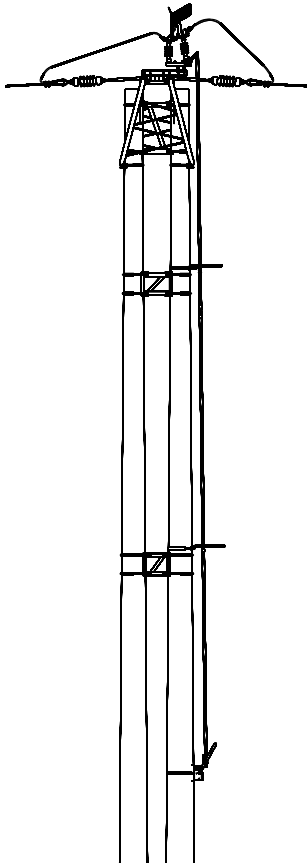
Swich disconnector on KO-9 construction variety **A**



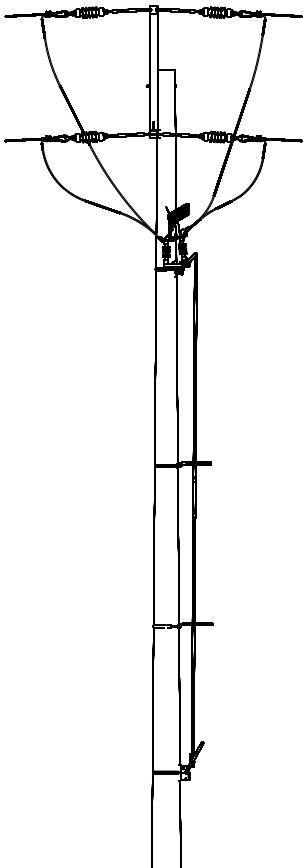
Swich disconnector on leg of a pillar variety **B**



Swich disconnector on the top of a rotatory pillar variety **C**



Swich disconnector on the top of a rotatory double pillar variety **C2**



Swich disconnector under conduits on a rotatory pillar variety **D**

#### USAGE:

SRUN-24 switch disconnecter with an earthing is used to switch on and switch off currents present in arterial-branch open grids of medium voltage in the range to 80A and earthing of isolated circuits.

We make switch disconnectors in the following varieties:

\*For installation on reinforced poles, such as ŻN and BSW

- variety **A** - this type of a switch disconnecter is installed at the top of a pillar (on a cross-arm or KO-9 construction)
- variety **B** - this type of a switch disconnecter is installed on the leg of a pillar under conduits

\*For installation on rotatory poles, such as E, E<sub>m</sub> and EPV

- variety **C** - this type of a switch disconnecter is installed at the top of pillar (on a cross-arm)
- variety **C2** - this type of a is installed at the top of a double pillar
  - > on a cross-arm PO-50 (conduit flat system) or
  - > on a head GS-30 (conduit trigonal system)

In your order, please note the type of pole, on which the isolator will be installed.

- variety **D** - this type of an isolator is installed on the leg of a under conduits

In your order, please note the type of pole, on which the switch disconnecter will be installed.

The apparatus has got copper contacts with silver plating.

Moving contacts are equipped with elastic terminals securing against fracturing the supply conduit.

There is a possibility of completing an isolator with additional retaining insulators as well as elastic terminals or with overvoltage limiters and elastic terminals.

The manufacture product consists of a connecting apparatus and strands.

The switch disconnecter can be set in motion with:

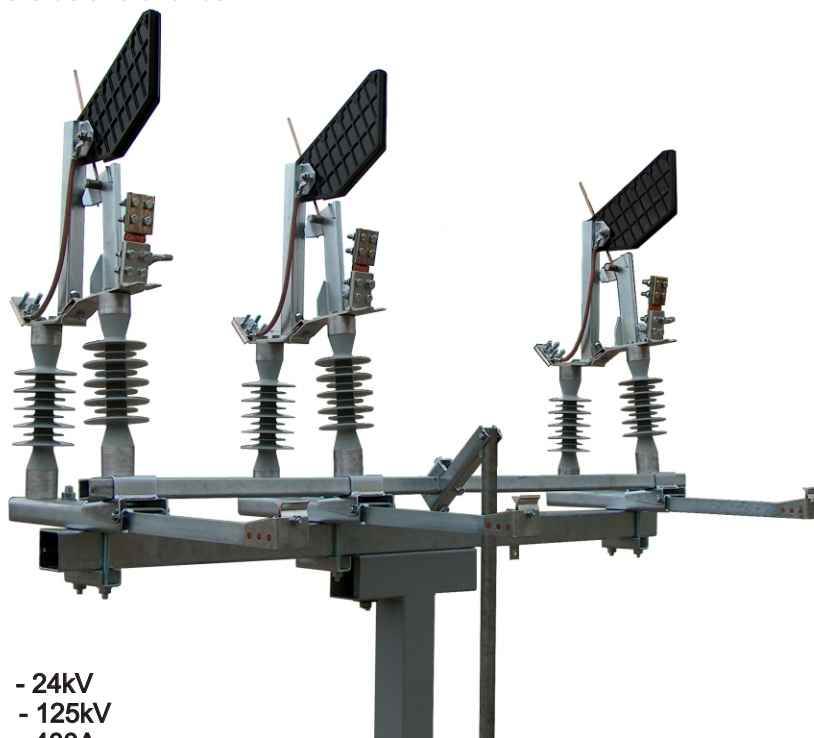
- a/ a hand drive NOU-2 to A and B varieties or
- b/ a hand drive NOU-2/O to C, C2 and D varieties

The switch disconnecter with an earthing switch has the possibility of blocking in three orientations:

- switch disconnecter in closed orientation
- switch disconnecter in open orientation, not earthed orientation
- switch disconnecter in open earthed orientation

The apparatus can be built in various insulators:

- **SRUN-24** type - on insulators with silicon sheds
- **SRUN-24cr** type - on ceramic insulators



#### TECHNICAL DATA:

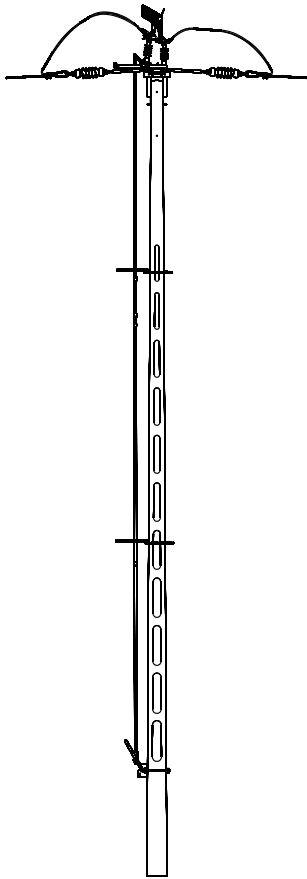
- rated voltage - 24kV
- percussive lighting voltage - 125kV
- stable rated current - 400A
- short circuit rated current 1s - 16kA
- rated breaking current in a circuit of small inductance - 80A
- rated breaking charging current - 20A
- rated breaking current of an earth fault - 60A
- rated breaking charging cables and voltage lines current in condition of earth fault - 38A
- switch disconnecter is equipped with extinguishing aerial chambers

Hand drive **NOU-2/O** catalogue nr 050 302

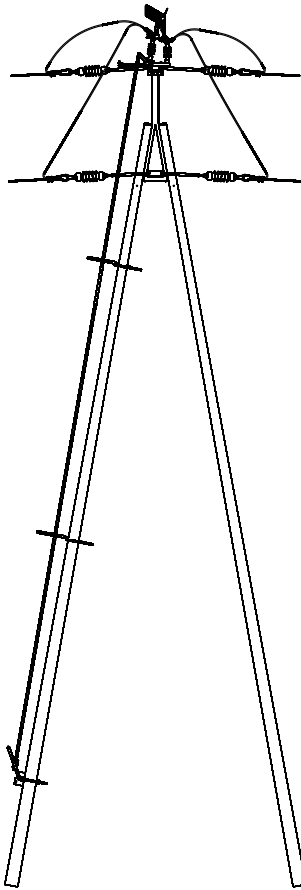
Hand drive **NOU-2** catalogue nr 050 301

	SRUN-24	SRUN-24cr
<b>D</b>	052 341	058 341
<b>C2</b>	052 332	058 332
<b>C</b>	052 331	058 331
<b>B</b>	052 321	058 321
<b>A</b>	052 311	058 311
variety	catalogue nr	catalogue nr

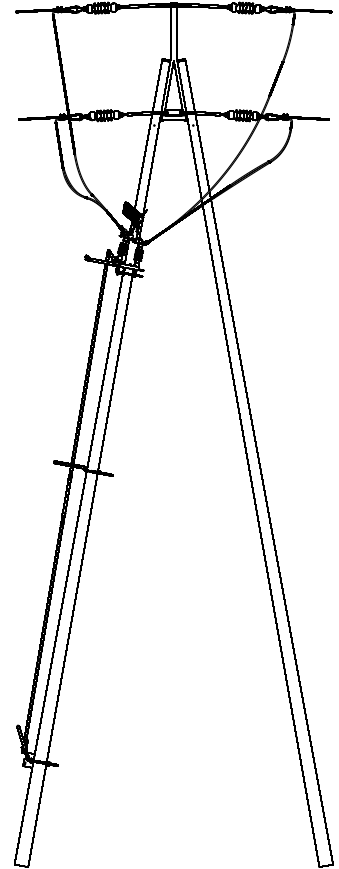
Switch disconnecter with an earthing type **SRUN-24, SRUN-24cr**



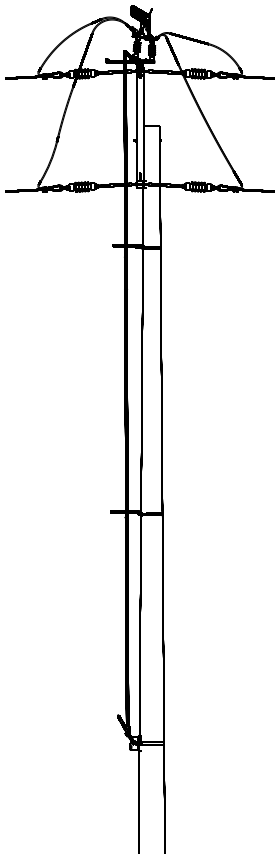
Switch disconnector on a cross-arm



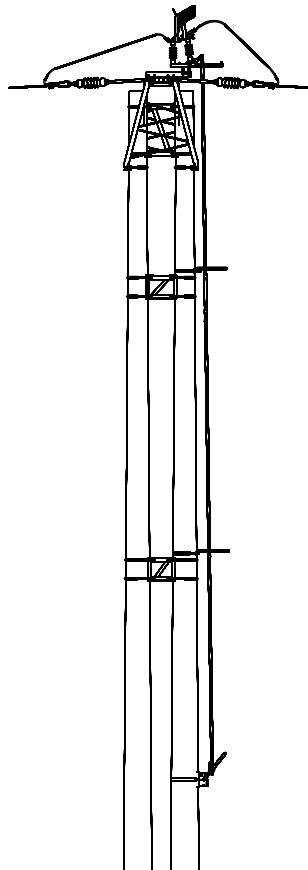
Switch disconnector on KO-9 construction  
variety **A**



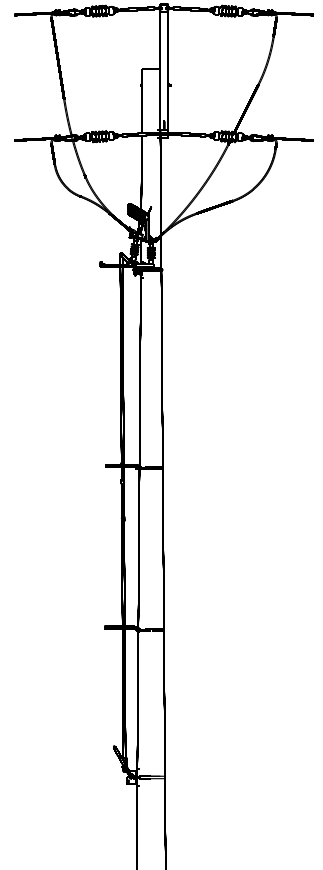
Switch disconnector on leg of a pillar  
variety **B**



Switch disconnector on the top  
a rotatory pillar  
variety **C**



Switch disconnector on the top of  
a rotatory double pillar  
variety **C2**



Switch disconnector under conduits  
on a rotatory pillar  
variety **D**

Switch disconnector type SRUN-24 installation techniques - examples