

USAGE:

NKM-1.2 drive is used to open and close isolator and switch disconnector in medium voltage lines.

TECHNICAL CHARACTERISTIC:

- supply voltage - 24V DC
- rated current - 19A
- make-time - 1,0s
- drive mass - 16kg
- overall dimensions - 290x480x210mm
- the grade of casing protection - IP43W

The drive is adjusted to be installed on an overhead line pillar (in your order, please note the type of the pillar)
The casing is made of galvanized painted steel box.

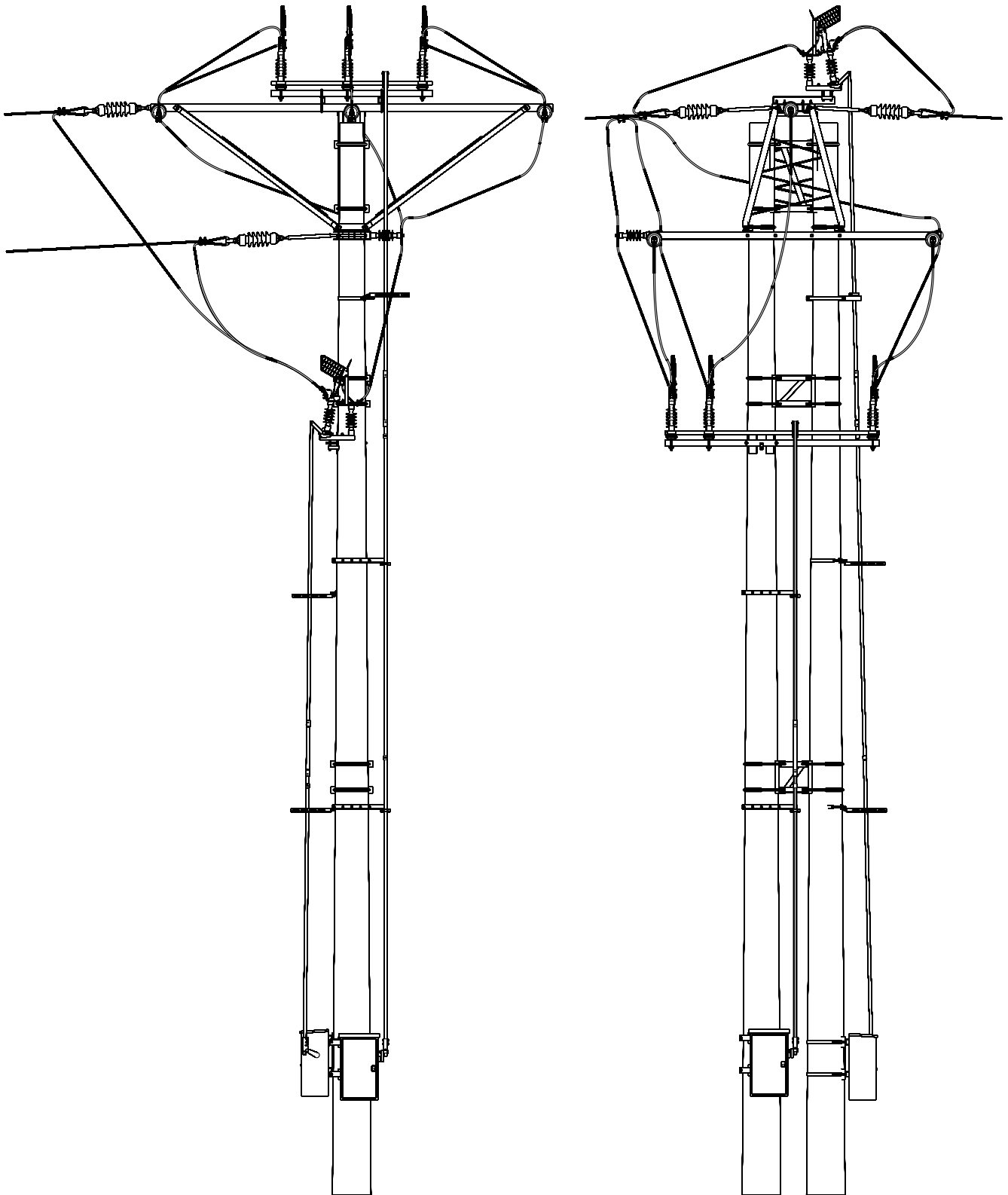
The drive can be activated:

- locally, with buttons located inside the box
- remotely, by the use of wires or radio
- manually, by the use of crank handle (to regulate)

The device is characterized by incredibly precise positioning of the isolator in the working orientations.

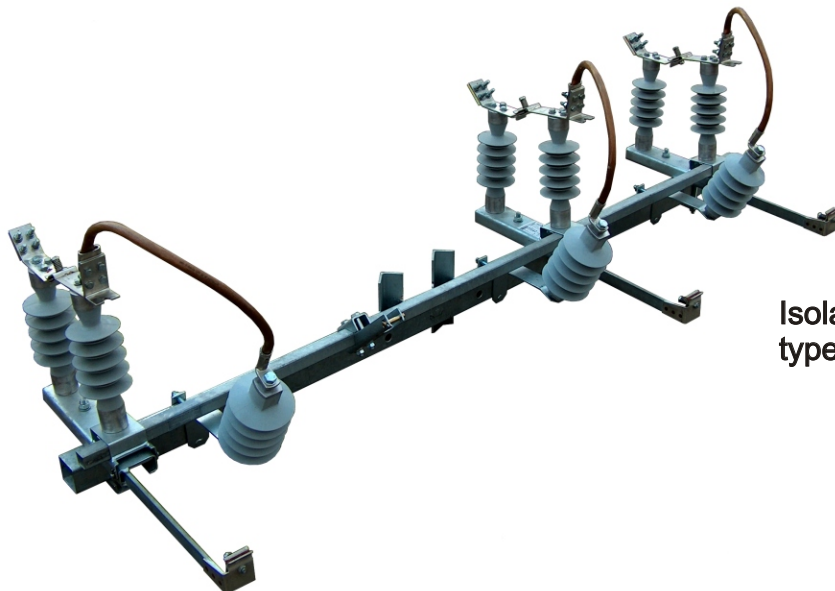
The drive is equipped with electrical and mechanical interlocking preventing the activation and the electrical and mechanical signaling of the position of isolator's contacts.



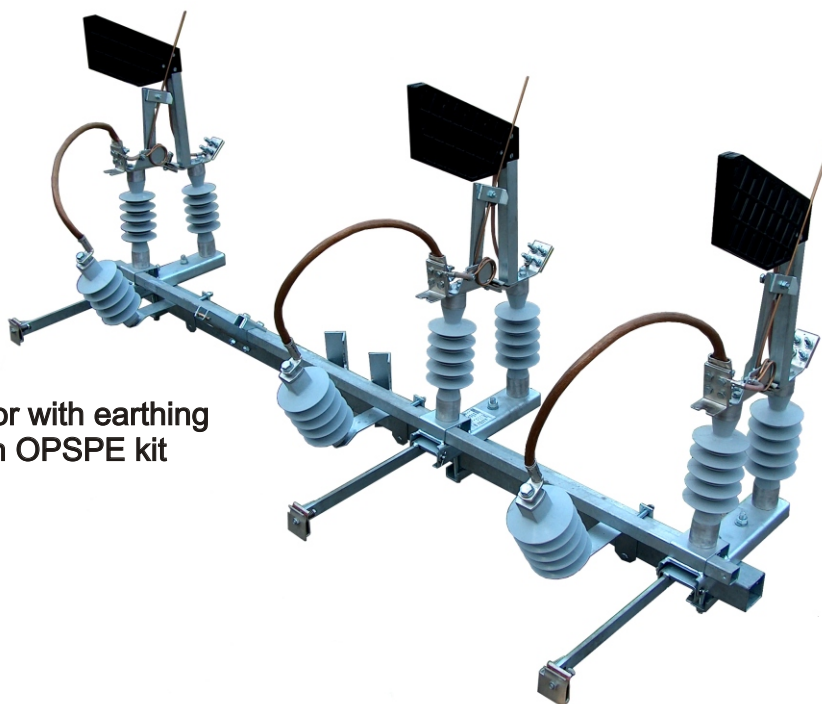


**SRN-24 switch disconnectors variety C2 and D with NKM-1.2 drive
on a ROKp21 pillar**

Example use of overvoltage limiters with elastic terminals



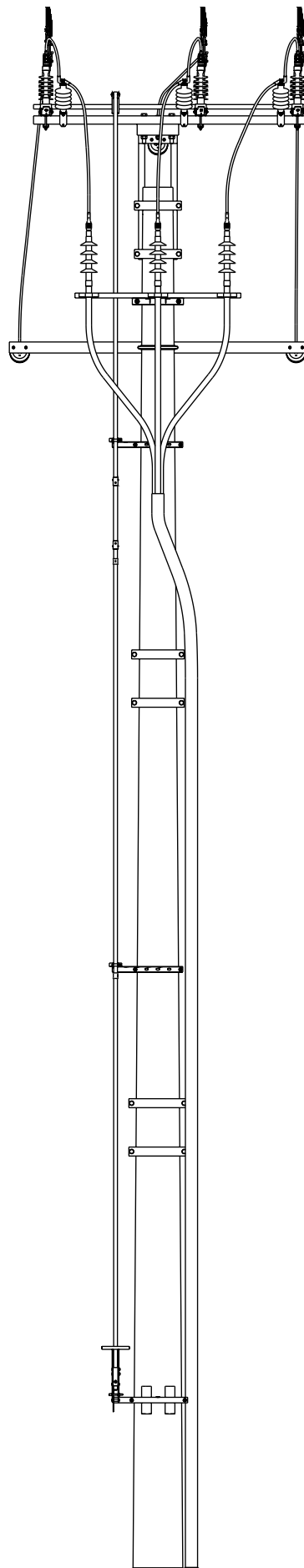
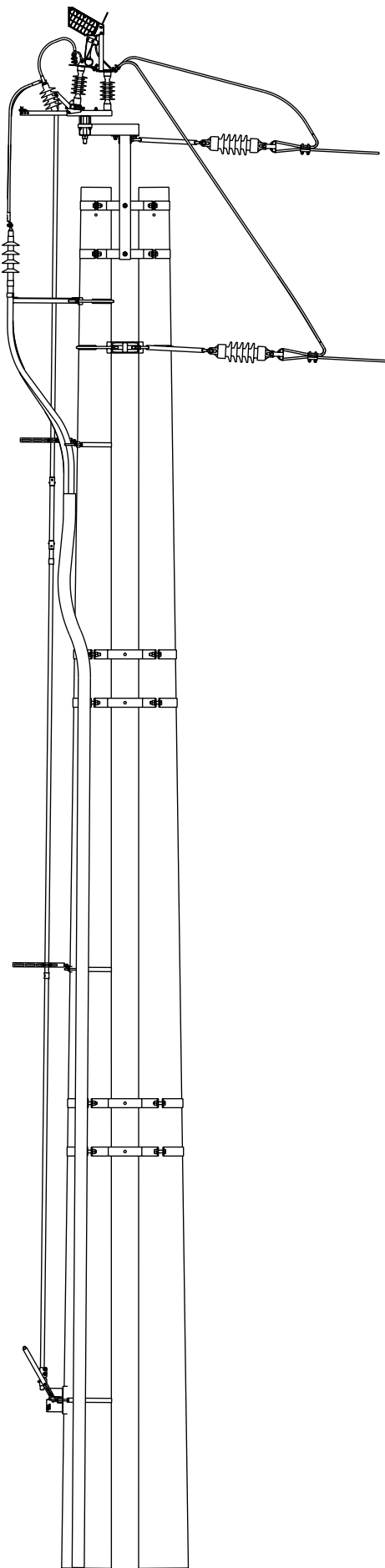
Isolator with earthing
type SOUN-24 with OPSPE kit



Switch disconnecter with earthing
type SRUN-24 with OPSPE kit

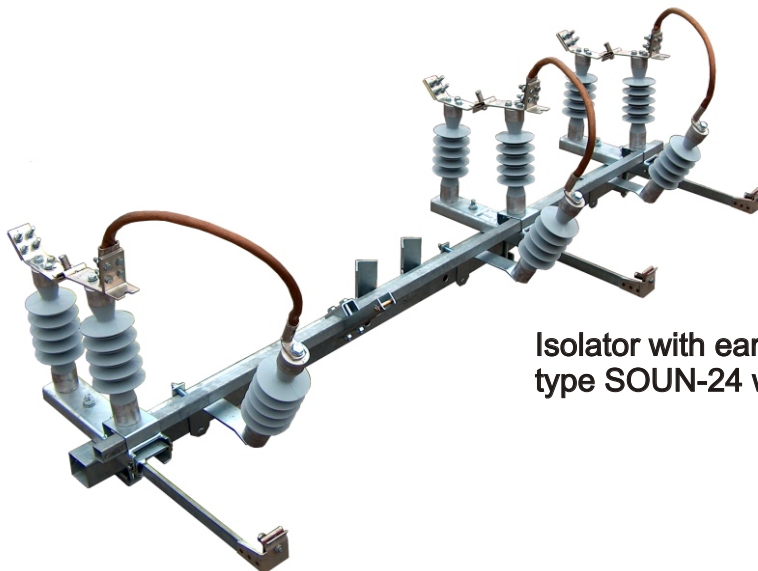
The kit consists of:

- 3 overvoltage limiters (type POLIM-D 18N or any other after agreement)
- 3 elastic terminals
- fastening elements

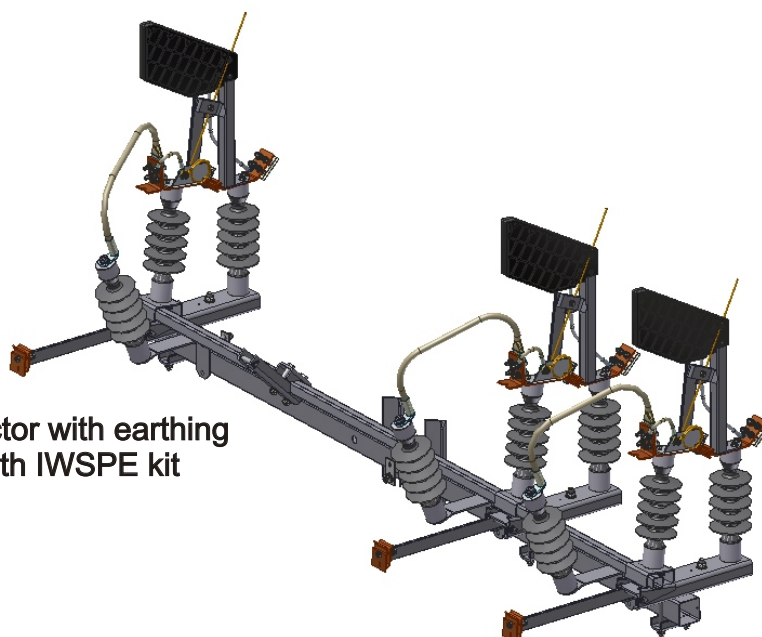


Switch disconnector with earthing type SRUN-24 with OPSPE kit
on a OP11 pillar with cable head

Example use of retaining insulators with elastic terminals



Isolator with earthing
type SOUN-24 with IWSPE kit



Switch disconnector with earthing
type SRUN-24 with IWSPE kit

The kit consists of:

- 3 retaining insulators
 - a) with silicon shed - **IWSPE** kit
 - b) ceramic - **IWSPEcr** kit
- 3 elastic terminals
- fastening elements

IWSPEcr type	051 503
IWSPE type	051 501