

#### USAGE:

SRUN-24 switch disconnecter with an earthing is used to switch on and switch off currents present in arterial-branch open grids of medium voltage in the range to 80A and earthing of isolated circuits.

We make switch disconnectors in the following varieties:

\*For installation on reinforced poles, such as ŻN and BSW

- variety **A** - this type of a switch disconnecter is installed at the top of a pillar (on a cross-arm or KO-9 construction)
- variety **B** - this type of a switch disconnecter is installed on the leg of a pillar under conduits

\*For installation on rotatory poles, such as E, E<sub>m</sub> and EPV

- variety **C** - this type of a switch disconnecter is installed at the top of pillar (on a cross-arm)
- variety **C2** - this type of a is installed at the top of a double pillar
  - > on a cross-arm PO-50 (conduit flat system) or
  - > on a head GS-30 (conduit trigonal system)

In your order, please note the type of pole, on which the isolator will be installed.

- variety **D** - this type of an isolator is installed on the leg of a under conduits

In your order, please note the type of pole, on which the switch disconnecter will be installed.

The apparatus has got copper contacts with silver plating.

Moving contacts are equipped with elastic terminals securing against fracturing the supply conduit.

There is a possibility of completing an isolator with additional retaining insulators as well as elastic terminals or with overvoltage limiters and elastic terminals.

The manufacture product consists of a connecting apparatus and strands.

The switch disconnecter can be set in motion with:

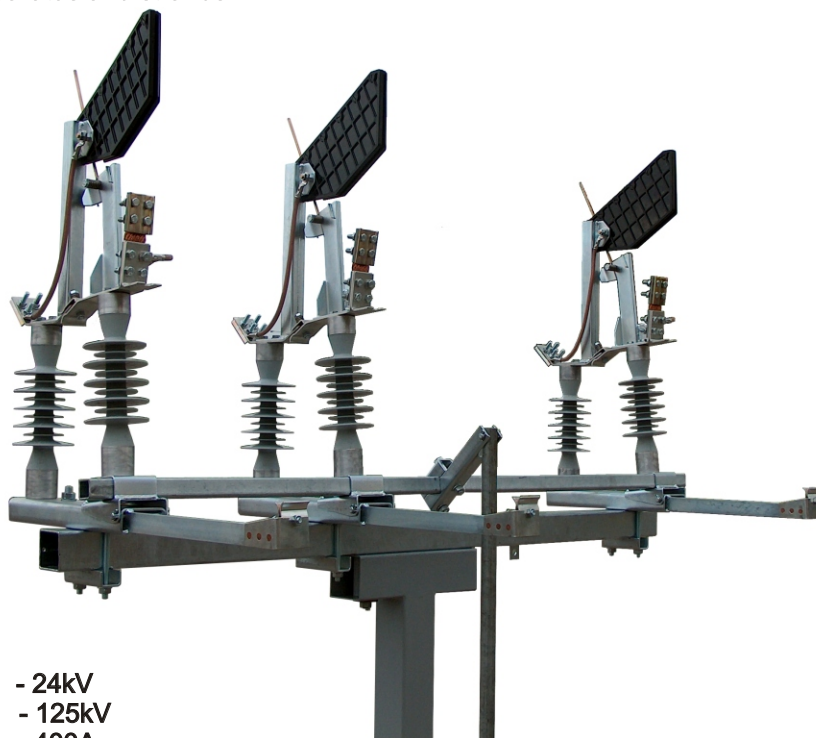
- a/ a hand drive NOU-2 to A and B varieties or
- b/ a hand drive NOU-2/O to C, C2 and D varieties

The switch disconnecter with an earthing switch has the possibility of blocking in three orientations:

- switch disconnecter in closed orientation
- switch disconnecter in open orientation, not earthed orientation
- switch disconnecter in open earthed orientation

The apparatus can be built in various insulators:

- **SRUN-24** type - on insulators with silicon sheds
- **SRUN-24cr** type - on ceramic insulators



#### TECHNICAL DATA:

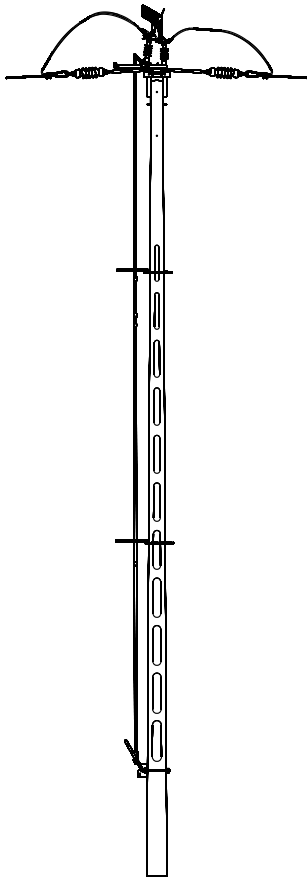
- rated voltage - 24kV
- percussive lighting voltage - 125kV
- stable rated current - 400A
- short circuit rated current 1s - 16kA
- rated breaking current in a circuit of small inductance - 80A
- rated breaking charging current - 20A
- rated breaking current of an earth fault - 60A
- rated breaking charging cables and voltage lines current in condition of earth fault - 38A
- switch disconnecter is equipped with extinguishing aerial chambers

Hand drive **NOU-2/O** catalogue nr 050 302

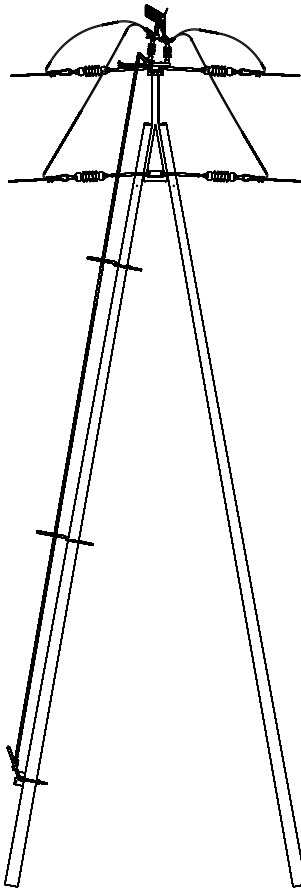
Hand drive **NOU-2** catalogue nr 050 301

	SRUN-24	SRUN-24cr
<b>D</b>	052 341	058 341
<b>C2</b>	052 332	058 332
<b>C</b>	052 331	058 331
<b>B</b>	052 321	058 321
<b>A</b>	052 311	058 311
variety	catalogue nr	catalogue nr

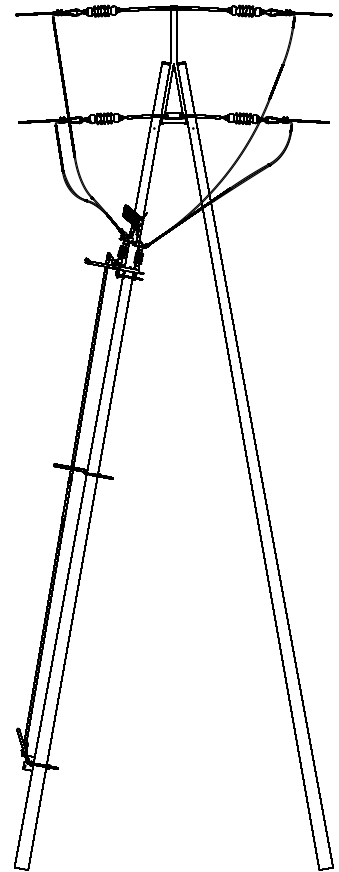
Switch disconnecter with an earthing type **SRUN-24, SRUN-24cr**



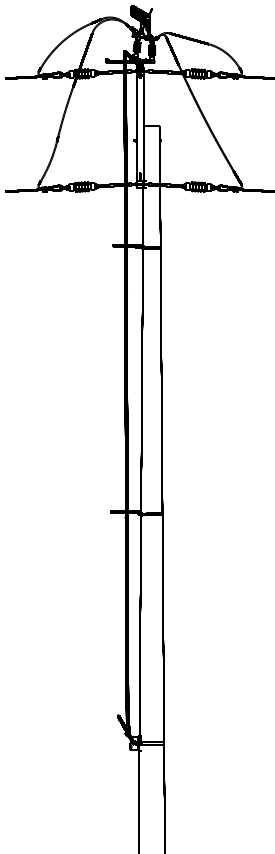
Switch disconnector on a cross-arm



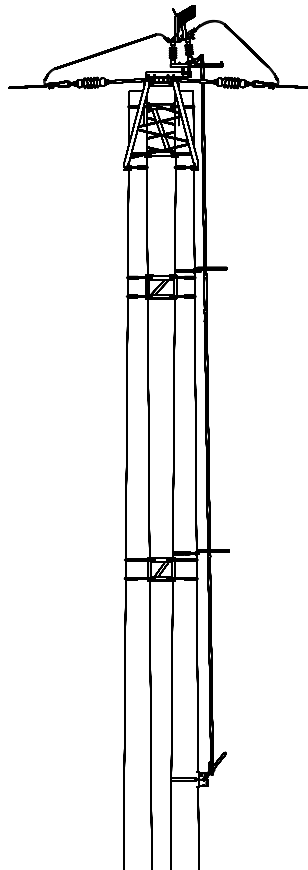
Switch disconnector on KO-9 construction  
variety **A**



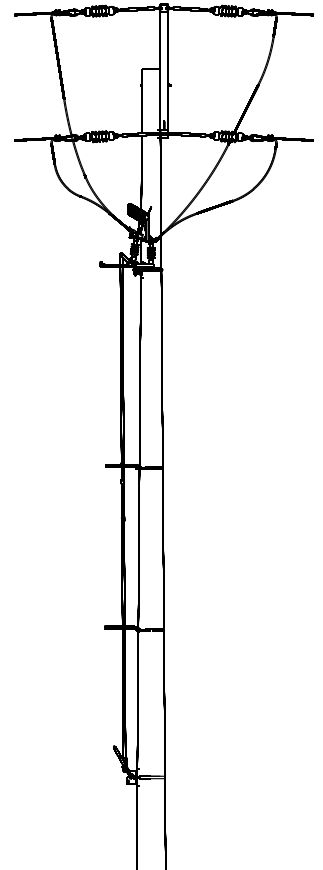
Switch disconnector on leg of a pillar  
variety **B**



Switch disconnector on the top  
a rotatory pillar  
variety **C**



Switch disconnector on the top of  
a rotatory double pillar  
variety **C2**



Switch disconnector under conduits  
on a rotatory pillar  
variety **D**

Switch disconnector type SRUN-24 installation techniques - examples